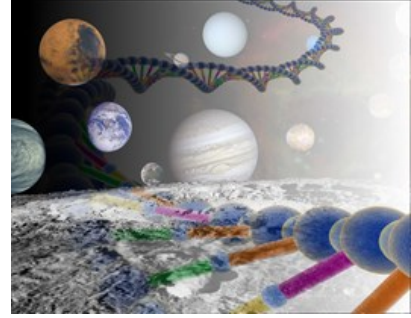


# Astrobiology

PHYS08051



*A 20 Credit, Level 8 course*

Ever wondered questions like:

- > How did life originate?
- > How did the Earth become a habitable planet?
- > Is there life elsewhere in the Universe?
- > What are the limits of life on Earth?
- > Can we establish a permanent human presence beyond the Earth?

Astrobiology is a first/second year course that runs in Semester 1 and investigates life in its cosmic context. Recent space missions such as missions to Mars and efforts to detect Earth-like planets around other stars provide the backdrop to understand life on our planet in a way never before possible. This course is underpinned by learning fundamental concepts in physics and astronomy, chemistry, geosciences, biology, philosophy accessible to students from any of these disciplines, but it seeks to build on this knowledge to understand the phenomenon of life.

The course has been running for three years and is open to students from any schools. Last year students from 11 different Schools across the university took the course.

## **Course content**

The course has:

33 lecture contact hours (on Mondays at 14:10 and on Friday at 15:10 and 16:10)

5 tutorials (1 every two weeks) on Monday 15:10 for two hours.

5 coursework exercises to be handed in (assessed and counts towards the final mark) and one presentation assignment.

Degree examination at the end of the course.